

Efficient, Reliable &  
**EXCELLENCE**



# INDEX

1

About us

2

Mission, Vision & Core Values

3

Why Choose US

4

Copper Pipe & Fittings

5

HVAC Insulations

6

Duct accessories & Parts

7

Adhesives, Sealants,  
Coatings & Tapes

8

HVAC Equipments

9

Hangers, Supports & Vibration  
System

10

Grills and Diffusers

11

Steel Pipes & Fittings

12

HVAC Expansion Joints

13

HVAC Parts & Accessories

14

Plumbing and Electrical Materials

15

Safety Shoes

16

HVAC Services



# ALPHEX HVAC and Electromechanical Solutions

Your Trusted Source for HVAC and other  
MEP Building Material Requirement  
Trading-Solutions-Maintenance

ALPHEX HVAC and Electromechanical Solutions is your One-Stop Source for Entire HVAC Products & Solutions. We're Dedicated to Giving you the Ultimate Products of Heating, Ventilation, Air Conditioning & Refrigeration and other MEP Solutions with quality & excellent Value for Money..

ALPHEX it is the Proud Recipient of the Multiple Excellence Awards. Furthermore, Internationally Renowned Testing and Certification Organizations Including AHRI, TUV, etc have Accredited its Goods.





## Company Objectives

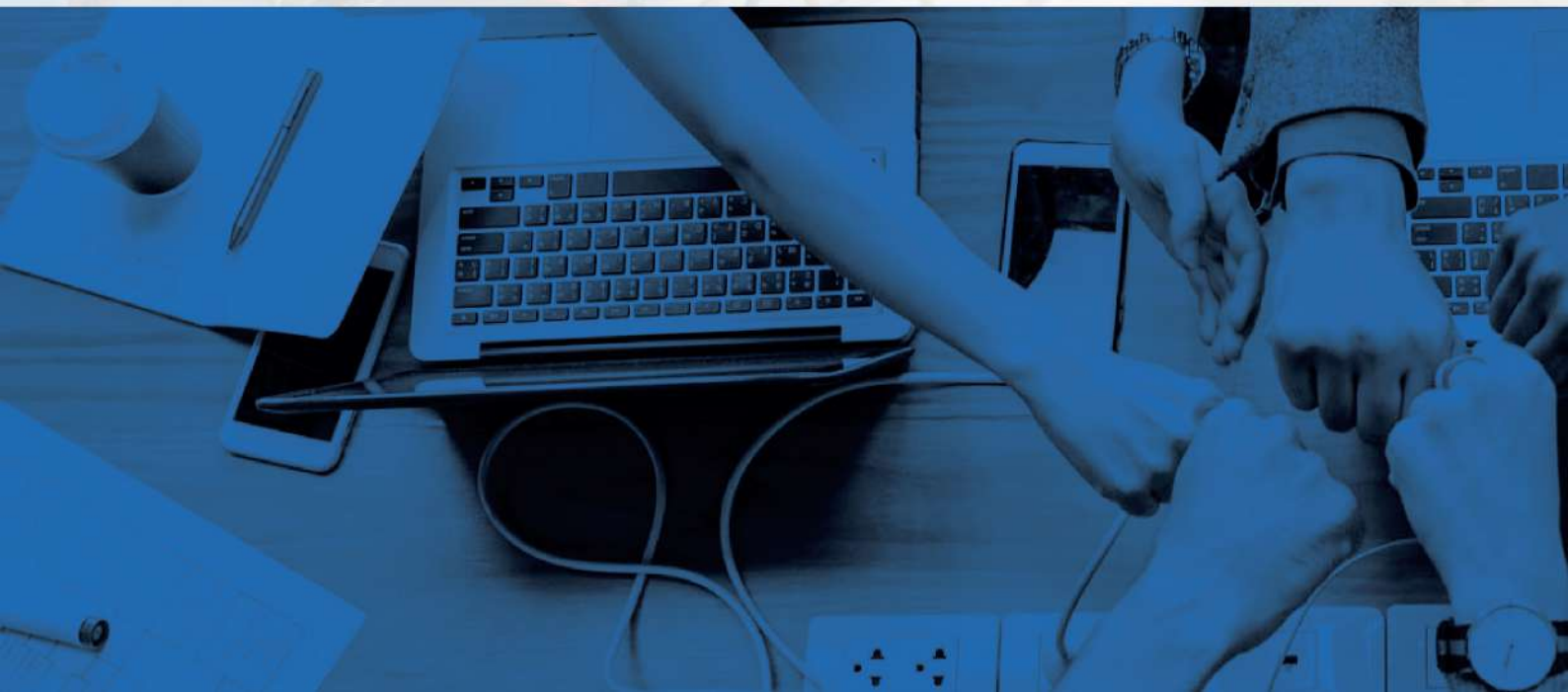
Alphex HVAC and Electromechanical Solutions is a leading company in the field of HVAC & other MEP Solutions and Services. We bring to the vibrant Saudi market the latest and requisite Products and tools from across the globe. With over two decades of experience in the industry, the directors understand the pulse of the Market. Alphex aims to bridge the gap between the Latest systems/technology. Infinity has over a thousand products to cater to your varied HVAC and other MEP needs. We procure HVAC & other MEP products from top brands across the world. In short we are a one stop for all HVAC and other MEP needs. We have a team of highly skilled Team to Provide quick response to the customer needs.

## Mission

- Provide a wide range of products and services in the trading and electromechanical segments.
- Aim to be the premier providers of top-quality HVAC and other MEP solutions.
- Maintain the highest standards of professionalism and ethics in all our endeavors.
- Promote innovation and offer relevant, quality products to our customers.
- Contribute to sustainable development through responsible business practices.

## Vision

- Become the leading and preferred choice for electromechanical solutions in Saudi Arabia.
- Deliver quality products and services with utmost efficiency.
- Invest in a team of qualified and dedicated professionals.
- Create strong partnerships with a global network of reliable manufacturers and suppliers.
- Continuously identify new opportunities and offer innovative solutions to meet the evolving needs of our customers.



## Core Values

- Respect and dignity towards clients and colleagues.
- Continuous improvement in work and capabilities.
- Maintain lean, focused, and competitive delivery of products.
- Embed trust into all aspects of our operations.
- Build relationships based on dependability, integrity trust and quality.

## About Us

We are proud to introduce ourselves as one of the leading suppliers of HVAC and other MEP products in KSA with several years of experience. We represent major manufactures from different countries over the world including USA, UK, Belgium, India, Italy, Germany, Korea, China, GCC and other countries.

We keep large scale of inventory to meet various standard and customer requirements. Alphex is certified to ISO 9001:2015 and committed to provide full satisfaction to our customer with respect to quality, reliability & delivery and attain quality leadership for all the products / service that are offered by us.





# Why Choose us



Supply, Installation & Maintenance Services



Competitive Price



Professional Technical Support



Extremely Long Service Life



One Stop for all HVAC & other MEP Complete range of Products



## Copper Pipes and Fittings





# Insulation



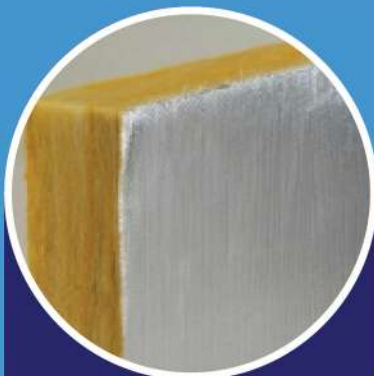
KDI: Kimmco Duct Insulation With FSK Facing (Slabs & Rolls)



K450: Kimmco Pipe Insulation with FSK Facing



KCL: Kimmco Duct Liner [Slabs & Rolls]



KCL: Kimmco Duct Liner [Slabs & Rolls]



K450 Plus: Kimmco Pipe Insulation with Aluglass Facing



KLI: Kimmco Lamella Insul: Thermal Insulation For Duct, Pipes & Vessels



KBR: Kimmco Building Roll



Climaver: Pre Insulated Ductwork System



EcoBuild : Mineral Wool Slabs & Rolls





### Fiberglass Insulations Products

Duct Insulations,  
Pipe Insulations,  
Board Insulations,  
Black Acoustic Liner Insulations,  
Roll Insulations,  
Building Insulations etc

### Kitchen Duct Insulation

#### 3M™ Fire Barrier Duct Wrap 615+

Commercial Kitchen Exhaust and Ventilation  
Air Ducts



### Foam Rubber Insulation



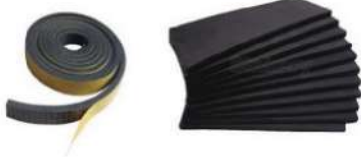
armacell  
engineered foams  
**AEROFOAM®**

Tube Insulations,  
Sheet Insulations,  
Foam Insulation Tapes,  
Rubber Adhesives



### Rock Wool Insulations

Duct Insulations,  
Pipe Insulations,  
Board Insulations,  
Black Acoustic Liner Insulations,  
Roll Insulations,  
Building Insulations etc



## PIR Duct Insulations



## Aluminium Claddings



Insulation Systems  
PARCO - CHILDERS METALS

## Duct Insulation Cloths

Canvas Cloth



Glass Cloth



## Duct Accessories

Duct Connector



AERODUCT®

AFS



Plain Tape, FSK Tape, Alu glass  
Tape & Black Tape

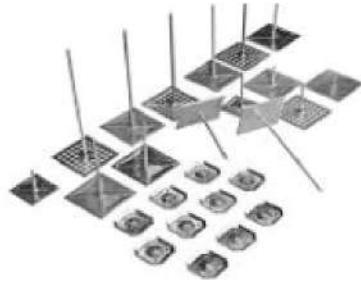


DUCTMATE  
Industries, Inc.





## Insulation Fasteners



**AFS**

**MaXcel**

**Climatech**  
INTERNATIONAL



Brand : Clim  
Origin : Belgium

Products :-

- Flexible Duct Connectors.
- Self-Adhesive Pins.
- Damper Control & Accessories.
- Clodding Accessories.
- Insulation Hangers.

## Flexible Ducts



Brand: Atco Rubber Products, INC

Origin: UAE

Brand: Easy Flex

Origin: UAE

Brand: AL AHRAM

Origin: KSA

Products :

- ATCO Flexible duct (Insulated)
  - ATCO Flexible duct (Non-Insulated)
  - Easy Flex (Insulated/Non-Insulated]
- (SIZES: 4", 6", 8", 10", 12", 14)

# Adhesives, Sealants, Coatings & Tapes



**Foster**™



STAR ADHESIVE, SEALANTS & COATINGS

Star 81-10  
 Star 30-36  
 Star 30-60  
 Star 32-17

**NAPCO**



**ABRO**  
 A TRUSTED NAME WORLDWIDE

**BondTape**®



**ASPEN**  
**TAPES**

**DIAMOND TAPES™**



Aluminum FSK Tapes  
 Aluminum Plain Tapes



## Hangers , Supports and Vibration System

### Vibration Isolators



Cased Spring Mount  
Restrained Spring Mounts  
Seismic Cable Braces  
Seismic Snubbers Acoustic  
Riser Anchors Acoustic  
Riser Guides

### Hangers & Supports



Split Clamps with rubber  
Lining  
Plain Split Clamps  
Clevis Hangers UL/FM  
Sprinkler Clamps UL/FM  
Girder Clamps  
U-bolts, U-Straps  
Pipe Roller with Chairs  
Riser Clamps  
Channel Clamps Slide Guides  
Offset Clamps  
Pipe Roller Hangers  
Pipe Saddles Rubber Inserts

## Air Grills, Diffusers & Dampers



Combination Fire /  
Smoke Damper



Jet Nozzle Single Element



Pressure Relief Damper



Variable Air Volume



Square Ceiling Diffuser  
3 way



Square Ceiling Diffuser  
4 way



Square Ceiling Diffuser  
1 way



Square Ceiling Diffuser  
2 way



Sand Trap Louver





Exhaust Air Valves



Linear Bar Grille Corner



Linear Slot Diffuser Corner



Square Volume Damper  
with Base Plate



Aluminium Louvers



Double Reflection Return  
Air Register



Square Ceiling Diffuser  
2-way



Louvers for Intake &  
Extract



Linear Bar Grille



Perforated Face Ceiling  
Diffuser



Return Air Grille 30 Degree  
Down Setting

## Air Filters



RIGID FILTER



CARBON FILTER



EXTENDED TYPE  
RIGID FILTER



HEPA HV



ALUMINUM  
FILTER



BAG FILTER



# Steel Pipes & Fittings



## Carbon Steel Pipe - Seamless :

Brand: ASCO.  
Origin: CHINA  
Brand: INTER PIPE.  
Origin: UKRAINE

Brand: NKK.  
Origin: CHINA  
Standard: ASTM A53 GR.B.  
ASTM A106 GR.B, API 5L GR.B  
Scheduled: 40, 80 & STD  
Finishing: Black.  
Sizes: ½" to 24"



جذيرة الجزيرة Jazeera Steel



## CARBON STEEL PIPE - ERW :

Brand: SAUDI STEEL PIPE COMPANY. SSP  
Origin: KSA

Brand: AL JAZEERA STEEL  
Origin: OMAN

Standard: ASTM A53 GR.A/B  
API 5L GR.B  
Scheduled: 40 & STD  
Finishing: Black & Galvanized  
Sizes: i. to 8- Al Jazeera Pipe  
ii. ½" to 20"-SSP Pipe



Hitachi Metals, Ltd.



## MALLEABLE IRON THREADED FITTINGS :

Brand: SA  
Origin: THAILAND

Brand: HITACHI METAL FITTINGS  
Origin: THAILAND

Class: 150  
Sizes: ½" to 4"  
Thread: NPT & BSPT



#### GROOVED DUCTILE IRON FITTINGS:

Brand: BENKEN & KOFCO

Origin: CHINA.

Standard: ASTM A234 WPB ANSI B16.9

Scheduled: 40 & STD

Finishing: Black

Sizes: to 24"



#### GROOVED DUCTILE IRON FITTINGS:

Brand: NUO

Origin: CHINA

Standard: ASTM A536 RAW

Material: DUCTILE IRON/CAST IRON

Finishing: PAINTED/EPOXY/GALVANISED

Sizes: 1 to 12"



#### HIGH PRESSURE PIPE FITTINGS :

Brand: BOTH-WELL

Origin: TAIWAN

PRODUCTS:

Elbow, Tee, Coupling, Nipple

Bushing, Union, Thread O Let Ect.

## HVAC Expansion Joints



SINGLE SPHERE  
CONNECTION  
WITH FLANGE



TWIN SPHERE  
CONNECTION  
WITH UNION

#### HIGH PRESSURE PIPE FITTINGS :

Brand: ARMFLEX Origin: TAIWAN

PRODUCTS :

SINGLE SPHERE CONNECTION WITH FLANGE

• Single Sphere Connection  
with Flange.

• Twin-Sphere Connection  
with Union Thread.



## Valves

CRANE®

Hattersley



Brand : CRANE  
Origin : UK

Brand : Hattersley  
Origin : UK

## Valve actuator and controls



Danfoss

CRANE®

GIACOMINI  
WATER E-MOTION

WATTS®  
Watts Water Technologies, Inc.

WIKAI

# HVAC Equipments

## Window AC



## Split AC



Multiple  
Brands  
Available



## Ventilation Fans





## Air Curtains



Multiple  
Brands  
Available

ASCO



## HVAC Parts & Accessories

### AC Compressors



DAIKIN

Panasonic  
Ideas for life



SAMSUNG

Copeland

LG

Danfoss

## Refrigerant Oil & Gas

### Gases



Refron Honeywell Midea

### Welding Gas



ROTHENBERGER UNIWELD

### Refrigerant Oil



Suniso

## General & Refrigerant Tools



ROTHENBERGER UNIWELD

MasterCool VICTOR  
AN EBAE BRAND

VALUE  
VALUE Creates Value



## Fan & Motors



Multiple Brands  
available

genteq

Carrier

LG

YORK

## Thermometer/Gauges

Industrial Thermometers  
Industrial Pressure Gauges  
Syphon Tubes  
Thermowells  
Gauge Cocks



## Flexible Hoses

Corrugated Metal Hose-  
Stainless Steel  
SS Braided EPDM Hoses



## Fire Fighting Pipes and Accessories

**Reliable**

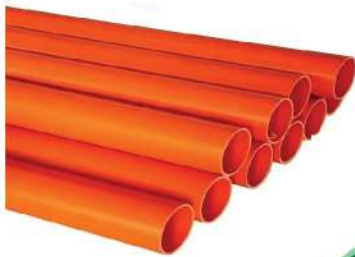
**Spraytech**  
Systems India Pvt. Ltd.  
The Flow Technologists



Brand : Reliable  
Origin : USA

Brand : Spraytech  
Origin : India

## Plumbing Materials



## Electrical Materials



## Construction Tools



## Safety Materials



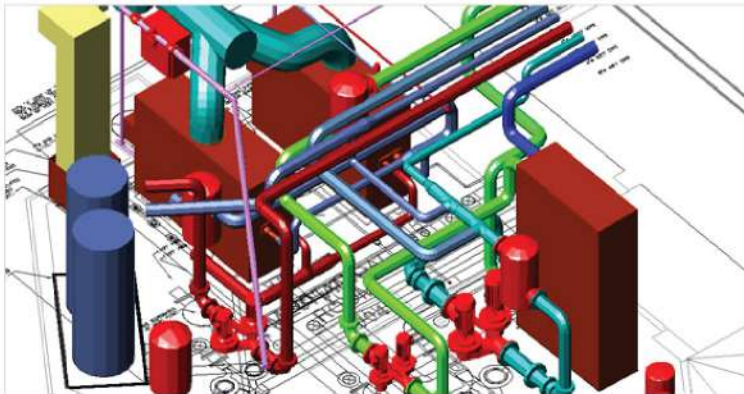


## HVAC & MEP Engineering Services

Whatever your theatre of operations, our aim is to provide to you, competent, experienced and presentable engineers, who will attend your servicing requirements in an efficient, courteous and cost conscious manner. Dedicated to providing a quality service; the company uses all avenues available to Provide continuous in-house and manufacturers training to maintain and improve Expertise and quality of our valued engineering staff. Working with ALPHEX, you can rest assured that you are dealing with professionals Who set the benchmark when it comes for the following services.

- HVAC - MEP Design & Consultation
- CHW Pump Head Calculation
- HVAC Duct ESP Calculation
- CFD Analysis
- Duct Leak Testing
- Duct Cleaning
- Operation and Maintenance

## HVAC - MEP Design & Consultation



ALPHEX strive to deliver innovative and sustainable MEP Engineering Design and Consultancy for Small, Medium and Large Projects of any type(Commercial/Industrial/Residential). Working for clients across KSA, we supply top-of-the-range air conditioning brand names, to offi-ce developments, hotels, restaurants, retail, and large commercial premises. Whether you require single split systems or large multi VRV/VRF air conditioning systems, we will provide you with a sustainable and long-lasting cooling and heating solution. We stay at the forefront of technological changes and new legislation in the HVAC industry.

Drawings are provided in CAD/RIVET Modelling format as per Clients requirement.

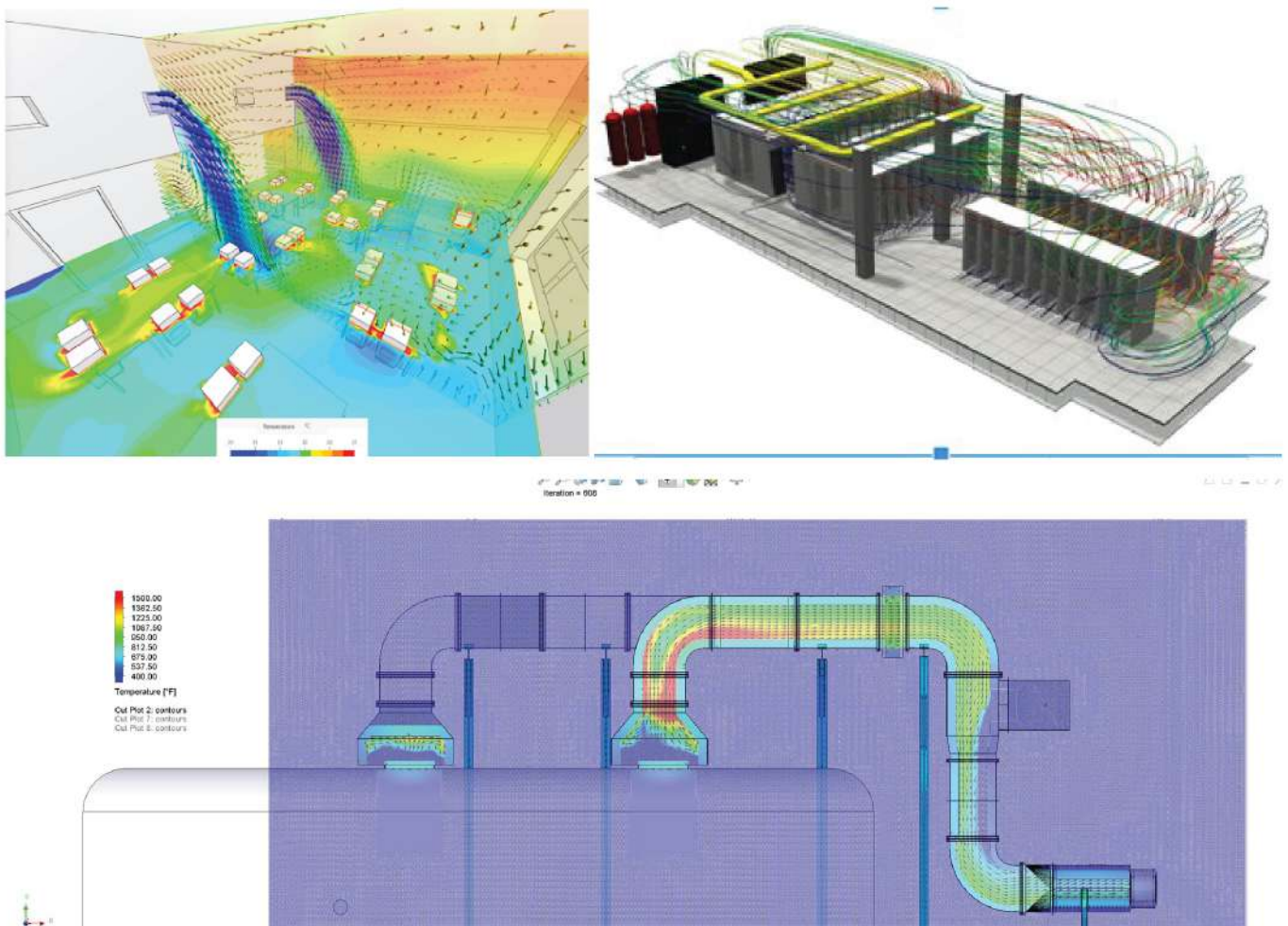


## CFD Analysis

Computational Fluid Dynamics (CFD) is used as a design tool for car park ventilation systems. The main advantage of CFD analysis is that the design strategy can be optimized prior to the installation of ventilation system, providing confidence to the contractor early in the project.

The CFD software excels in thermal comfort modeling, helping users analyze and visualize the impact of HVAC designs on occupant comfort levels across different building areas.

Using CFD technology, we can finely tune your HVAC installation to meet specific requirements before even mounting a single piece of equipment onboard your ship. CFD enables us to realistically simulate air flows within the project space in advance.





## HVAC Installation, Service & Maintenance

Having your commercial air conditioning system serviced and maintained by skilled professionals who know their industry inside and out saves you costly repair bills and reduces the downtime of your air conditioning. Over time, air conditioning units may become less energy efficient, leading to higher energy bills. We make sure your system is performing at its peak regardless of its age or make.





## Duct Leak Testing

Leaking ducts can reduce HVAC system efficiency by as much as 40% or even more. Unless you inspect a duct system for leaks, you may never know how much efficiency (and money) is being lost. This simple, yet effective testing can save a great deal of money and Energy. This is why air duct leakage testing is so important. The only way to truly measure the effectiveness of HVAC system is to seal it and use special equipment to run a pressurized test and see if any air is leaking out through holes in the ductwork. This is a procedure which is done during the rough in process, but it can also be performed throughout various stages of construction. It can also be performed long after construction has been completed if you suspect your ductwork may have been damaged or compromised in some way. This is a very common occurrence and most buildings today are suffering from some percentage of leakage in their ductwork.





## Air Duct Cleaning

Air duct cleaning redefines home health. Eliminating dirt, dust and microbial growth from your ductwork can improve indoor air quality while maintaining a cleaner home and increasing HVAC efficiency. Clean ducts mean less dirt in your home and air because ductwork is often the source and pathway for dust and biological contaminants. There can be pounds of dirt hiding in your air ducts. Buildup from daily HVAC use, pet dander, new construction or remodeling, smoking and water damage can add millions of dirt, dust and debris particles in your ductwork. Together with our proprietary equipment and professionally trained technicians. Don't wait for cleaner indoor air. Schedule your free inspection today and start breathing cleaner air.





**CRANE**



**Honeywell**





# OUR PRESTIGIOUS CLIENTS

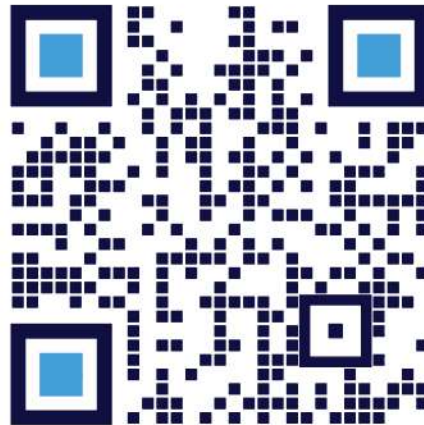


مجموعة بن لادن السعودية  
SAUDI BINLADIN GROUP





HVAC and Electromechanical Trading & Solutions



A/C & Refrigerator Spare Parts  
HVAC | Plumbing | Electrical - Building Materials  
HVAC -MEP Engineering & Services

📍 Qandeel Cross | Baladiya Street, Jeddah, KSA  
☎ +966 57 030 5599 ✉ info@alphexsa.com 🌐 www.alphexsa.com